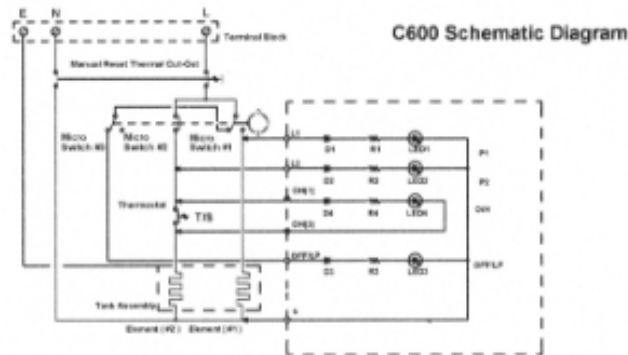




Classis Series - C600

Multipoint Instantaneous Electric Shower Heater



PRECAUTION: Should you observe any water leakage from the water heater, stop using the water heater immediately and turn off the inlet stopvalve to prevent further leakage. Contact the servicing agent for instructions.

NOTE:

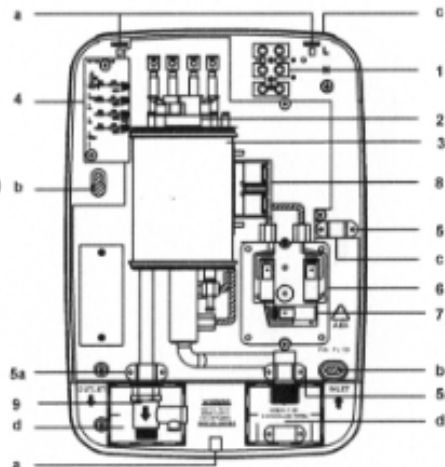
- i) The appliance is not intended for use by persons (including children) with reduced physical, sensory or mental capabilities, or lack of experience and knowledge, unless they have been given supervision or instruction concerning the use of the appliance by a person responsible for their safety.
- ii) Children should be supervised to ensure that they do not play with the appliance.
- iii) The maximum inlet water pressure shall not exceed 750kPa and the minimum inlet water pressure shall not be less than 100kPa for the correct operation of the appliance.
- iv) The water heater must be permanently connected to the electrical supply through a double pole switch having a contact separation of at least 3mm in all poles incorporated in the fixed wiring. **Do not use 3 pin plug or socket for this appliance.**

COMPONENT LAYOUT

- 1) Terminal Block
- 2) Thermostat (Safety Thermal Cut-Out)
- 3) Tank Assembly
- 4) PCB Light Indicator For C600
- 5) Cable Clip
- 5a) Pipe Clip
- 6) Pressure Differential Flow Switch (PDS)
- 7) Micro Switch
- 8) Manual Reset Thermostat
- 9) Pressure Relieve Valve

MOUNTING HOLES AND CABLE ENTRY POINT FOR CLASSIC SERIES

- a) Cover Fixing Holes X 3
- b) Wall Mounting Holes X 2
- c) Cable Entry
- d) Conceal Piping



WARNING: i) This appliance is not to be used for a potable water supply
ii) The water inlet of this appliance shall not be connected to inlet water obtained from any other water heating system

| | |
|------------------------|--|
| Nominal Power Rating | 4.5-5.3kW, 220-240V, 50-60Hz, AC |
| Minimum Water Pressure | 100kPa |
| Water Connection | 15mm (1/2" BSP) |
| Heating Element | Japan |
| Heater Casing | Splash Proof IP25, Flame Retardant ABS Plastic |
| Dimension | 320mm x 220mm x 130mm |
| Weight | 1.96kgs |

Installation & Operating Instructions

BENNINGTON

SITTING OF SHOWER HEATER

WARNING: THE SHOWER HEATER MUST NOT BE POSITIONED WHERE IT WILL BE SUBJECTED TO FREEZING CONDITIONS.

The heater can be mounted in various position shown in Fig. 1. Position it away from direct contact with water from the Hand Shower. Mixer tap can be used with this heater. If in doubt, please consult a qualified plumber or contact your Local Authorized Distributor.

1. Separate permanently connected supply from consumer unit
2. Shower set
3. Shower heater unit
4. Mixer Tap
5. Double poles heater switch
6. Isolating stopvalve

NOTE: Installation must be carried out by a qualified electrician.

MOUNTING THE SHOWER HEATER TO THE WALL

NOTE: The control knob on the cover is integral part of the heater; do not try to remove it during mounting of heater.

1. Unscrew the top and bottom retaining screws and lift the cover up from the base plate.
2. Place the base plate on the desired mounting position, upon confirmation, mark out the position of the 2 mounting holes on the wall. (See Fig. 2)
3. Drill and insert the wall plug supplied into the holes. Mount the base plate with the wall screws provided without tightening the screws to leave some allowance for adjustment after plumbing has been adjusted. After that tighten both screws.

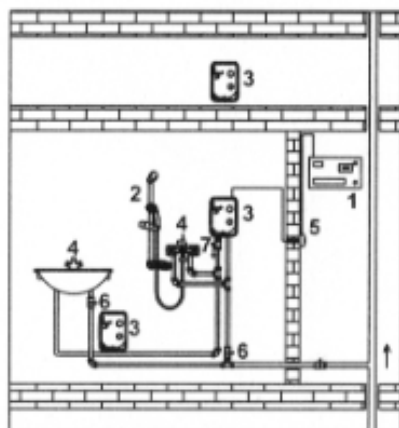


Fig. 1 Diagrammatic View (not to scale)

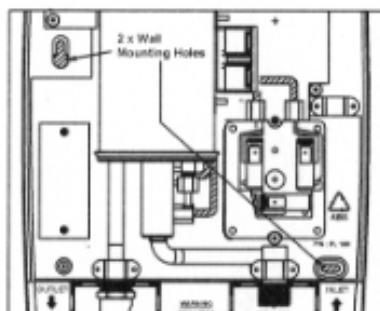


Fig. 2

PLUMBING CONNECTION

NOTE : Plumbing is to be done before wiring.

Do not use any jointing compounds on any pipe fittings for installation.

Do not use soldered fittings within the vicinity of the shower unit.

Compression fittings supplied must be used and not quick connect types. If a filter is to be used it is to be inserted in the inlet pipe of the Shower Heater.

A Stopvalve (complying with the water by-laws) must also be fitted as an independent means of isolating the water supply should maintenance or servicing is required. (See Fig. 3)

If the premises is new, remember to flush out the incoming water piping of debris and particles before connecting to the heater.

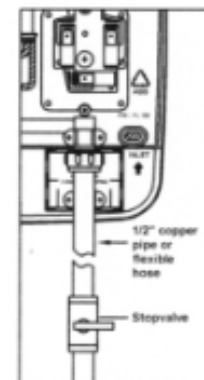


Fig. 3 PLUMBING CONNECTION

PRESSURE RELIEVE VALVE

The auto-reset Pressure Relieve Valve (PRV) will help to release excess high pressure built up due to abnormal operation to prevent eruption of the tank body. Install at the outlet of the heater and discharge hose should direct to waste. (See Fig. 4)

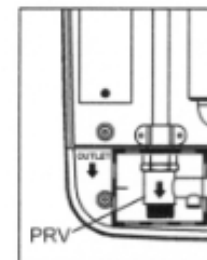


Fig. 4 PRESSURE RELIEVE VALVE

NOTE: Flushing Out
Once plumbing work is completed, flush out the tank by running water through the tank for 20 sec, this will remove any debris in the tank and piping. **DO NOT TURN ON POWER AT THIS STAGE.**

ELECTRICAL CONNECTION

WARNING: THIS UNIT MUST BE EARTHED.

This a 4.5kW heater. A minimum of 20A isolation switch & MCB are required. Cable used must be of minimum 2.5mm² or 110/0075" type copper cable

Procedures

Ensure that the electricity is switched off. Use the cable entry points as shown. The cable can be surface clipped, hidden or via a conduit.

Route the cable into the Water Heater and connect it to the terminal block as shown in Fig. 5.

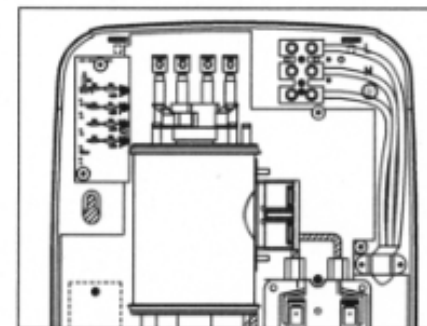


Fig. 5 ELECTRICAL CONNECTION

Live cable (red or brown) to terminal marked L
Neutral cable (blue or black) to terminal marked N
Earth cable (green & yellow) to terminal marked E

NOTE: Installation must be carried out by a qualified electrician and plumber.